



LS-7551 Reverse Preparation Set

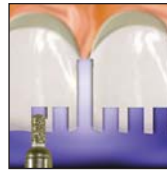
As the Director of Clinical Education for Glidewell Laboratories, Dr. Michael DiTolla has the opportunity to see thousands of preps and impressions every week. It was evident that a preparation technique for porcelain fused to metal restorations as well as all-ceramic restorations that is based on depth cuts will reduce frustrations for dentists and lab alike. The Reverse Preparation technique was designed to insure adequate reduction and to make preparation of the margin as simple as possible. The unique use of the round diamond to prepare the gingival margin as the first step of the technique helps ensure that your laboratory technician will be able to fabricate the best fitting restorations for your patients.

- By Dr. Michael DiTolla
Director of Clinical Education
Glidewell Laboratories

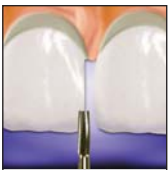
SUGGESTED TECHNIQUES



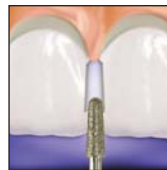
C801-021: This round diamond is used to simultaneously place the gingival depth cut and create the gingival margin. The round shape of the bur ensures a perfect margin every time.



MADC-020: This self-limiting axial reduction diamond is 2.0mm long and is used to place incisal edge depth cuts for porcelain fused to metal and all-ceramic restorations for anterior teeth. It is also used to place occlusal surface depth cuts on posterior teeth.



H57-FG: This carbide is used to break contacts when adjacent teeth are not being prepared. It can also be used to remove amalgam, composite or other existing restorations.



SC856-025: This diamond is used to break contacts and simultaneously provide axial reduction when preparing adjacent teeth. It is also used to finish the margins and blend reduction planes.



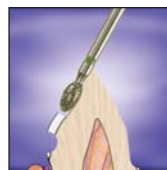
MADC-006: This self-limiting axial reduction diamond is 0.6mm long and is used to place depth cuts for porcelain veneers on the facial surface of anterior teeth.



SC856-016: This diamond is used to break contacts and provide axial reduction when preparing teeth adjacent to unprepared teeth. Because of its thinner nature, this bur is also good for placing interproximal margins.



MADC-015: This self-limiting axial reduction diamond is 1.5mm long and is used to place axial reduction depth cuts for porcelain fused to metal and all-ceramic restorations for anterior and posterior teeth.



SC379-023: This convex football shaped diamond is ideal for preparing lingual surfaces of anterior teeth. It is also ideal for connecting occlusal depth cuts on posterior teeth due to its speed of cutting and the fact that it leaves a concave surface.

Reorder Information

To reorder NTI instruments for the LS-7551, please contact your preferred dental dealer or call an AXIS Product Specialist toll-free:

888.654.2947